



## **B&M PAINTING CO., INC.**

347 Van Buren  
Camden, Arkansas 71701  
Phone: (870) 836-3388  
Fax: (870) 836-3399

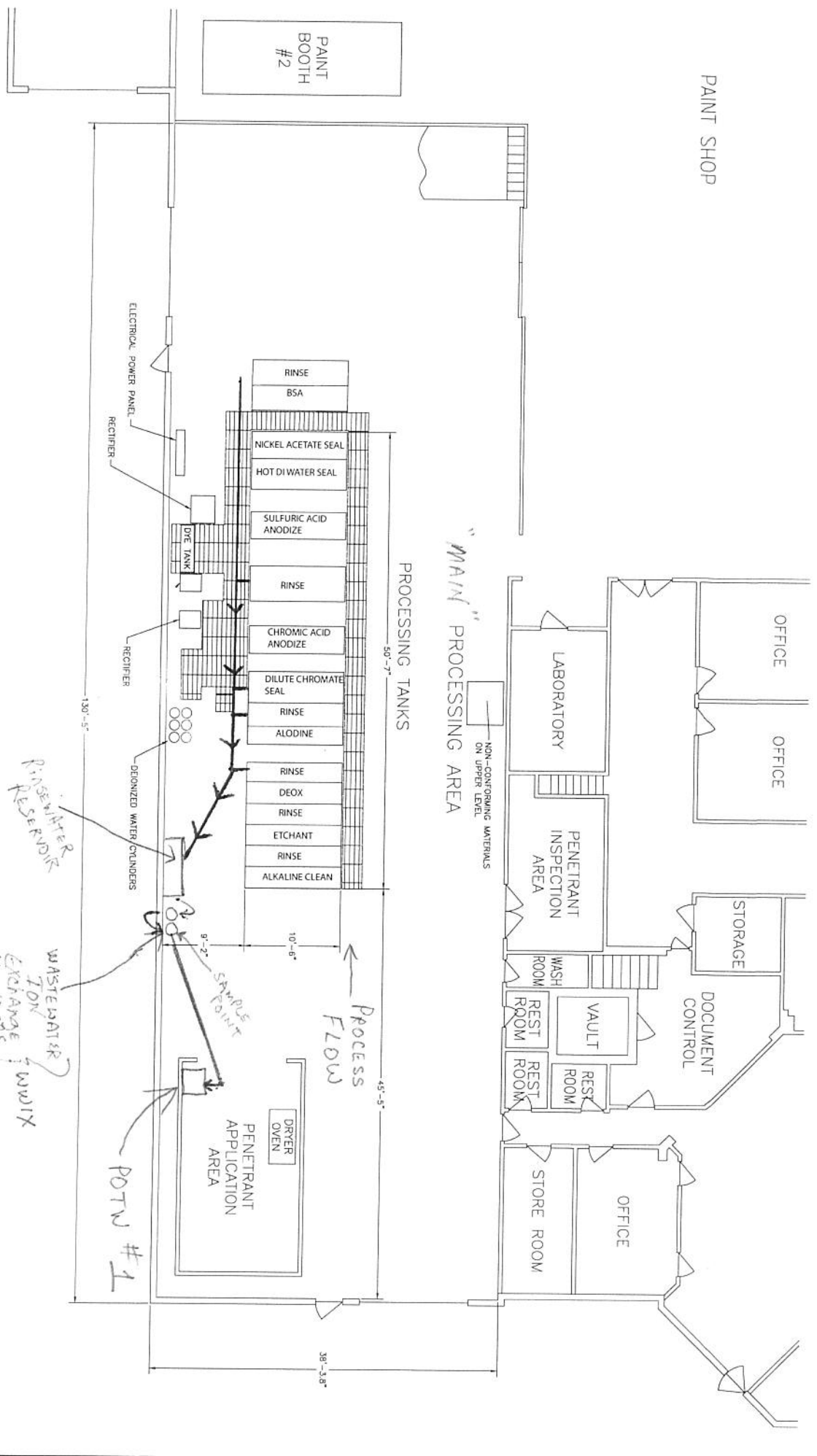
### **B & M Painting Waste-Stream Diagram** **Bldg 1 – Main Process** **(IAW 40 CFR 403.12(b)(3))**

#### Chrome rinse-waters/flow and disposition

- Only chrome rinses are flowed to the Waste-Water Ion Exchange (WWIX) reservoir
- All other chrome process tanks have no drain and are pumped into shippable waste-water totes when bath is spent
- Chrome rinse-waters are then held in WWIX reservoir until pump flows it through a 2-cylinder bank of WWIX Resin Cylinders for complete chrome removal (less than .008 mg/L)
- Initial flow rate was assigned to facilitate plenty of contact time of rinse-waters flowing through WWIX special resin (2 cylinders)
- Following WWIX flow, at sample point the effluent is tested twice weekly to ensure compliance of NMT 3 ppm going to POTW
- As of 4-4-14, readings for both POTW #1 (main process – bldg 1) and POTW #2 (bldg 4) were both less than 1 ppm

BLDG 1

PAINT SHOP



B & M PAINTING COMPANY CAMDEN, ARKANSAS	
B & M PAINTING FACILITY LAYOUT	
DATE	REV
10/11/01	1
10/11/01	2
10/11/01	3
10/11/01	4
10/11/01	5
10/11/01	6
10/11/01	7
10/11/01	8
10/11/01	9
10/11/01	10
10/11/01	11
10/11/01	12
10/11/01	13
10/11/01	14
10/11/01	15
10/11/01	16
10/11/01	17
10/11/01	18
10/11/01	19
10/11/01	20
10/11/01	21
10/11/01	22
10/11/01	23
10/11/01	24
10/11/01	25
10/11/01	26
10/11/01	27
10/11/01	28
10/11/01	29
10/11/01	30
10/11/01	31
10/11/01	32
10/11/01	33
10/11/01	34
10/11/01	35
10/11/01	36
10/11/01	37
10/11/01	38
10/11/01	39
10/11/01	40
10/11/01	41
10/11/01	42
10/11/01	43
10/11/01	44
10/11/01	45
10/11/01	46
10/11/01	47
10/11/01	48
10/11/01	49
10/11/01	50
10/11/01	51
10/11/01	52
10/11/01	53
10/11/01	54
10/11/01	55
10/11/01	56
10/11/01	57
10/11/01	58
10/11/01	59
10/11/01	60
10/11/01	61
10/11/01	62
10/11/01	63
10/11/01	64
10/11/01	65
10/11/01	66
10/11/01	67
10/11/01	68
10/11/01	69
10/11/01	70
10/11/01	71
10/11/01	72
10/11/01	73
10/11/01	74
10/11/01	75
10/11/01	76
10/11/01	77
10/11/01	78
10/11/01	79
10/11/01	80
10/11/01	81
10/11/01	82
10/11/01	83
10/11/01	84
10/11/01	85
10/11/01	86
10/11/01	87
10/11/01	88
10/11/01	89
10/11/01	90
10/11/01	91
10/11/01	92
10/11/01	93
10/11/01	94
10/11/01	95
10/11/01	96
10/11/01	97
10/11/01	98
10/11/01	99
10/11/01	100

